



SILVERWARE
POS INC.

SilverWare POS

Moneris Pay@Table
8200 or IWL2XX

Contents

Moneris Processing with Ingenico 8200 or IWL 2XX Device3

 SE Software Setup 3

 Avrio Software Setup 4

 Device Configuration..... 8

Quickservice/Cash & Carry Establishments.....9

Setting Units to Static IP Addresses (can be done if site is having connectivity issues).....9

Moneris Processing with Ingenico 8200 or IWL 2XX Device

NOTE

To enter a period on the pay@table device, press “0” and then the “Admin” (.,#* on the iwl 2xx devices) button.

SE Software Setup

SilverWare SE must be upgraded to version 2010.3.1 or higher.

You will need the “CHILKAT,” “FATCAT,” and “SilverWare.Avrrio. PayAtTable (for SE sites)” applications.

Open setup.exe from c:\forsys\exe and set features.paytable to 1. If the site is switching from integrated debit/credit cards, settle any credit/debit batches, print any reports, and then turn off these features by settings features.cd_card to 0 and features.db_card to 0.

The pay@table devices (Ingenico 8200 or IWL2XX) must be setup and tested in standalone mode. Moneris and the client are responsible for setting up and testing the devices in standalone mode.

A visit from a SilverWare dealer may be required to install switches to split connections to a SilverWare station and the pay@table base

Java must be installed on the SilverWare server.

Copy the CHILKAT“CHILKAT,” “FATCAT,” and “SilverWare.Avrrio. PayAtTable (for SE sites)” folders to the SilverWare server. All should be placed in C:\forsys

Run the installer in the CHILKAT directory and follow the install wizard. The only option you need to change is that it must be installed for “Everyone” not just the user you’re logged in as.

Create shortcuts on the desktop for “SilverWare.Avrrio.PayAtTable.exe” from the “SilverWare.Avrrio. PayAtTable (for SE sites)” folder and “FATCAT32.exe” from the “FATCAT” folder. These shortcuts should also be placed in the startup folder. Start both programs.

If “SilverWare.Avrrio. PayAtTable (for SE sites)” opens and immediately closes upon running the executable, it is likely that Java is not installed.

Avrio Software Setup

The pay@table devices (Ingenico 8200 or IWL2xx) must be setup and tested in standalone mode. Moneris and the client are responsible for setting up and testing the devices in standalone mode.

To enable pay@table in Avrio:

- Store license must have pay@table enabled
- Module must be enabled in store config and ALL payment methods must be mapped, even if the client will not be accepting certain card types.

SilverWare Configuration Tool

Ice 'n Cake

Store Configuration

Name	Alias	Expiry Date
Acadia	Acadia	8/16/2011 11:59:59 PM
Ice 'n Cake	Ice 'n Cake	8/16/2011 11:59:59 PM
Marigolds and Onions	Marigolds and Oni	8/9/2011 11:59:59 PM
Urban Herbivore	Urban Herbivore	7/28/2011 11:59:59 PM
Walkers Fish Market	Walker Mississaug	8/2/2011 11:59:59 PM

Overflow Payment Method: ...

Do not forget to configure credit/interac settings under the stations section.

Pay@Table Module

Enable Module: ☒

Card Type Mappings:

Card Type	Payment Method
DEBIT	Debit
MCRD	MasterCard
VISA	VISA
DINER	Diners
DSCVR	Discover
AMEX	American Express
JCB	JCB
PrivateLabel	Cheque
CASH	Cash (CAD)
GIFT	Gift Certificate

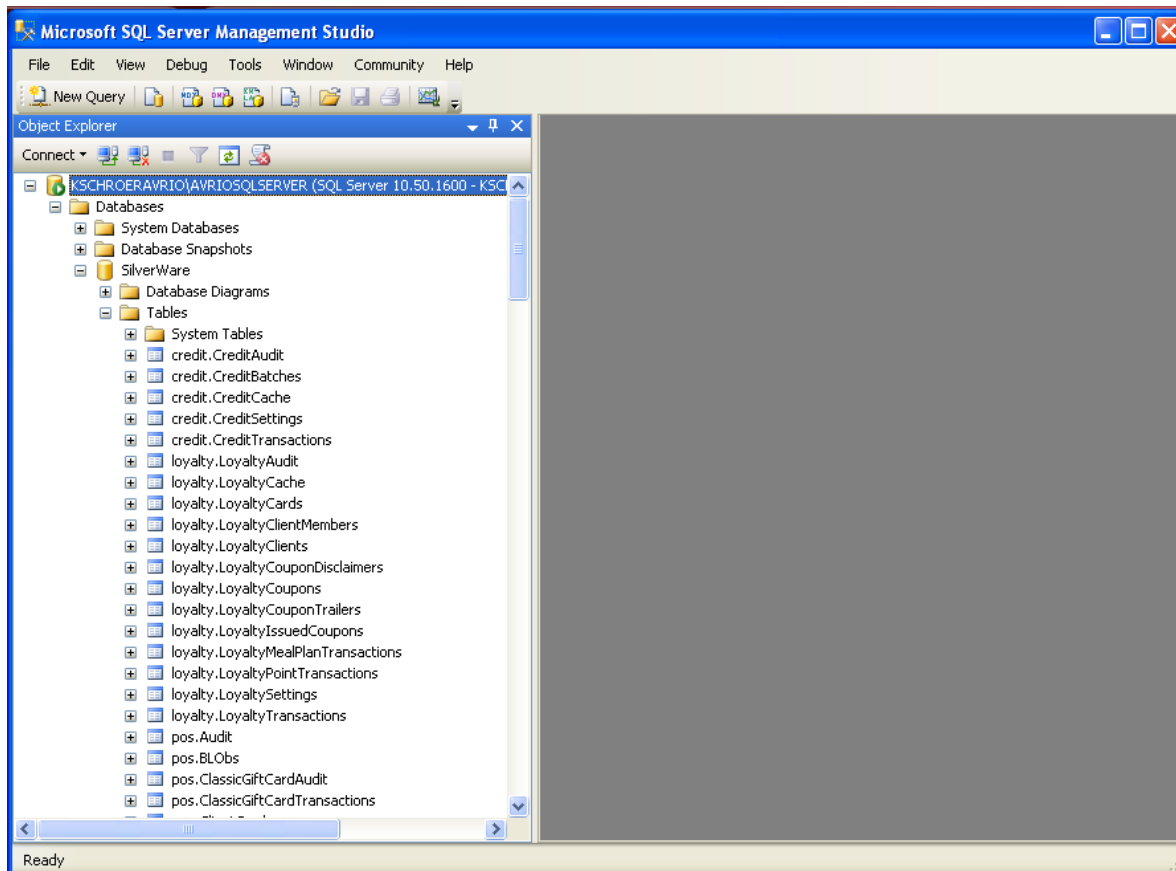
Card Type Mapping Details:

Card Type: GIFT

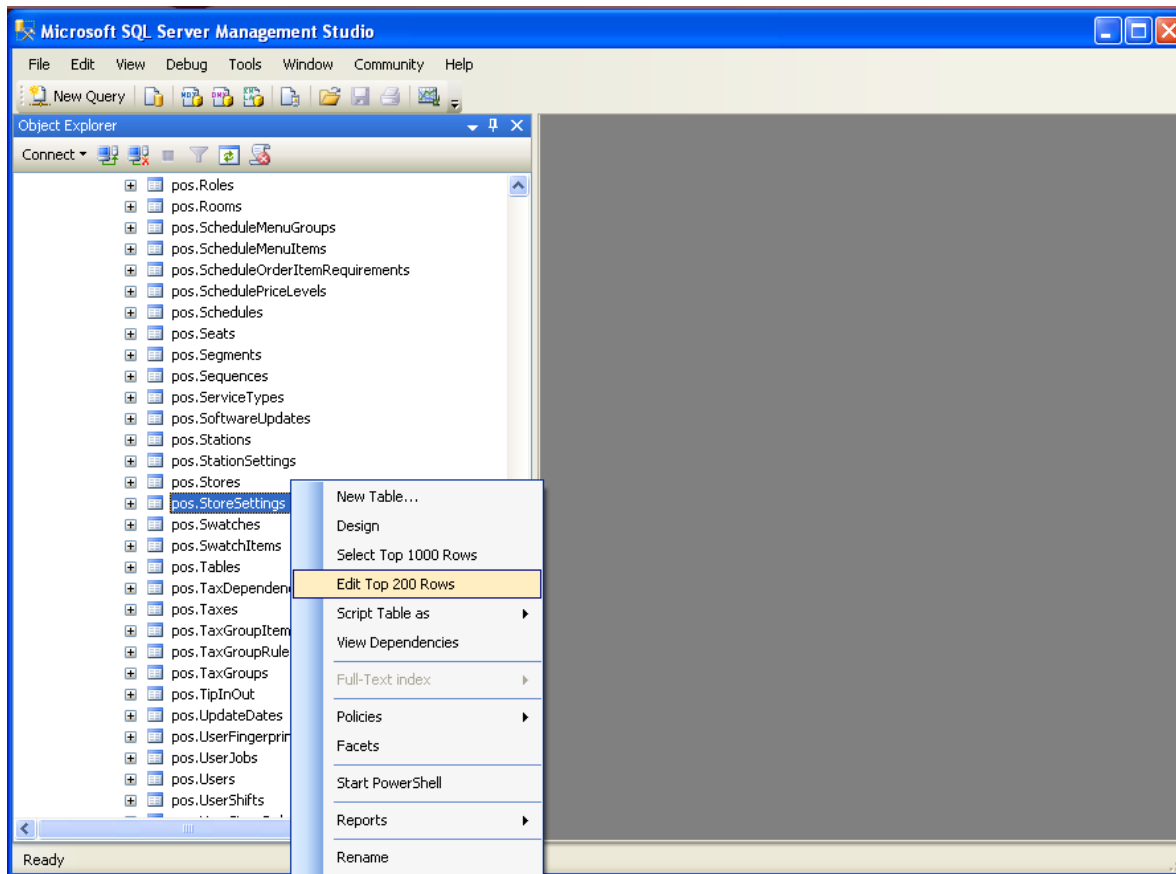
Payment Method:

- Avrio pay@table service must be installed

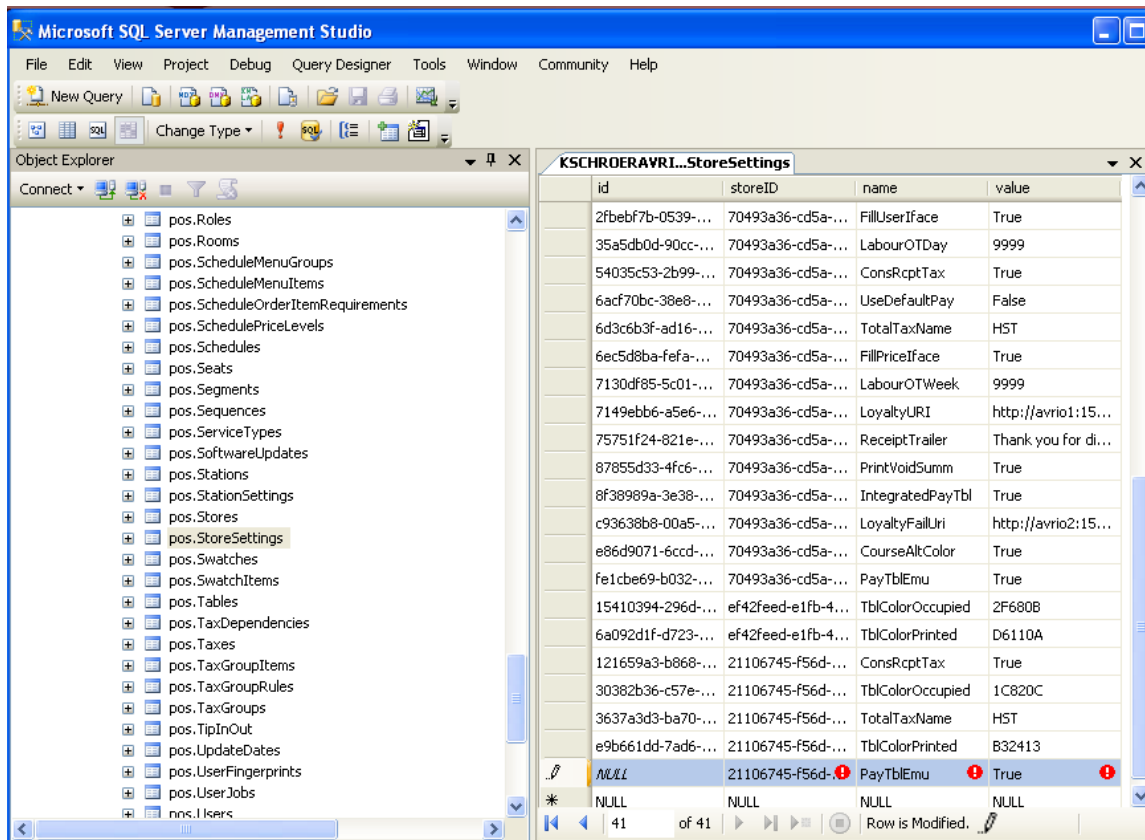
- To enable emulator:
 1. Load SQL Management Studio
 2. Connect to principal database
 3. Expand Databases
 4. Expand tables



5. Right-click on pos.storesettings and select edit top 200 rows



6. In a new record, enter the correct storeID into the "storeID" column
7. Setting name is "PayTblEmu"
8. Value is "True"
9. SQL will fill out the ID field, do not enter anything into this field.



10. Tab off the new record and exit SQL
11. Restart the pay@table service

Device Configuration

1. The units must first be setup in stand-alone mode (backlight, tip entry, etc.). Also, the FATCAT & TGI software must be setup and active.
2. The screen on the device should say "Enter purchase amount"
3. Press **Admin (.,#* on iwl2xx device)**
4. Using the **F1** and **F3** keys on the device, scroll to and then select "Configuration"
5. Select "General parameters"
6. Select "Restaurant"
 - a. IF THIS OPTION IS NOT AVAILABLE, THE UNIT HAS LIKELY ALREADY BEEN SETUP FOR RESTAURANT MODE. Press cancel until your get back to the main screen and press F2 (second button from the left on the top row) to switch to rest mode. You should then be able to get to this option using steps 3-6
7. Select type "1"
8. Press **Cancel** three times until you see "Initialization required"
9. Press the **Admin (.,#* on iwl2xx device)** key twice, then enter "01"
10. Select "Yes" for "Retain setting?"
11. Select "No" for "Clear Terminal Storage?"
12. On the "Please logon" prompt, press the **Admin (.,#* on iwl2xx device)** key twice, then enter 02
13. Swipe the white Moneris owner card
14. The screen should now say "Employee login swipe/enter ID"
15. Press the **Admin (.,#* on iwl2xx device)** key twice, then enter "18"
16. Will be in Rest Comm Cfg – select primary host address
17. Enter IP address at server (192.168.... etc.)
18. Scroll down to Primary port # - enter 9999 for SE sites or 9998 for Avrio sites
19. Will be back in the rest comm. Cfg - Hit cancel
20. If goes back into 'employee login swipe/enter ID' then should be setup
 - a. To test, enter server number (same as in Silverware), if there are printed tables under that servers number then the info will come up, follow the process, swipe payment card.
 - b. If approves and closes order at the POS then everything is setup correctly.

To Allow Refunds:

1. Press the **Admin (.,#* on iwl2xx device)** button.
2. Select Configuration
3. Select Rest. Config
4. Select Refund – Set to yes

Quickservice/Cash & Carry Establishments

In order to skip the prompts for table and seat selection;

- Press the **Admin (.,#* on iwl2xx device)** button
- Scroll through the options until you reach “Table Prompt” and set it to “No.”
- Scroll through the options until you reach “Check Prompt” and set it to “No.”
- Press **Cancel** three times to return to the main screen.

Setting Units to Static IP Addresses (can be done if site is having connectivity issues)

1. Press Admin twice (.,#* on iwl2xx device). Enter “13”
2. Select Terminal Setup
3. Select Terminal Type
4. Select Static
5. Scroll down to Terminal Addr and enter an acceptable IP address
6. Scroll down to Mask ID and enter the subnet mask
7. Scroll down to Gateway and enter the gateway address
8. Press cancel
9. Scroll to DNS setup
10. Select Prim Address and enter the primary DNS address
11. Press cancel until you receive TCP/IP ok.
12. Press admin twice and enter 01
13. Retain current merch settings –YES
14. Clear terminal storage – NO
15. When please logon appears, press admin twice and enter 02
16. Press admin twice (.,#* on iwl2xx device) and enter 09
17. Scroll down to polling and set it to off.
18. Press cancel twice to return to the employee login/swipe screen.

Turning off Clerk Subtotals

switch standalone

press admin (either F or # key)

configuration

clerk totalsa

swipe admin card

if you need merchant # - cancel out to main screen, press admin, reports, config list, say no to trailer messages

enter merch. #

select clerk subttl

try setting to no/disable